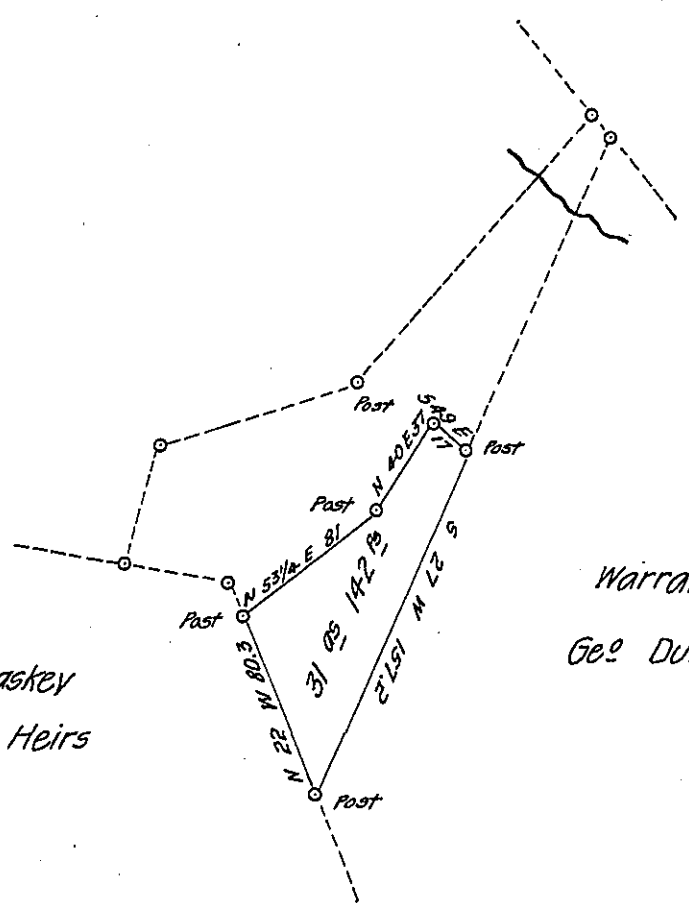


Neal McCaskey
Now - Erwit's Heirs



Warrant to
Geo. Duffield

Draft of a tract of land situate in Wayne Township Mifflin County containing thirty-one acres and one hundred and forty two perches and allowance of six per cent for Roads &c. Surveyed for George Hanawalt the 3rd day of June 1869; being a part of a larger tract of one hundred and six acres and eight perches and allowance; Originally surveyed in pursuance of a warrant granted to William Scott, dated the 22nd day of Feby 1776.

John Swartzell C.S.

To Jacob M. Campbell Esqr.
Surveyor General of Pa.

IN TESTIMONY that the above is a copy of the original remaining on file in the Department of Internal Affairs of Pennsylvania, made conformably to an Act of Assembly approved the 16th day of February 1833, I have hereunto set my hand and caused the Seal of said Department to be affixed at Harrisburg, this thirteenth day of February 1907

Leach B. Brown
Secretary of Internal Affairs.